

# Unit 3

## The mystery of the Tollund man

Notes



# What are historical sources?



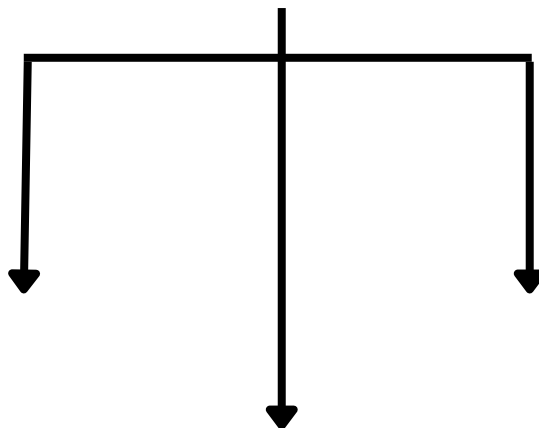
## Sources are:

- The hints or \_\_\_\_\_ that provide information about the \_\_\_\_\_, such as details about how people \_\_\_\_\_ or what they \_\_\_\_\_ or \_\_\_\_\_.
- Anything from the \_\_\_\_\_. All sorts of things can be sources: \_\_\_\_\_ (written sources), pictures, \_\_\_\_\_, artefacts(\_\_\_\_\_) and even \_\_\_\_\_.

## Primary source vs Secondary source:

- A primary source is made by \_\_\_\_\_  
\_\_\_\_\_
- A secondary source is a record of an \_\_\_\_\_  
\_\_\_\_\_

## There are different types of sources:



### Who is a history detective?

- A History Detective is somebody who looks at \_\_\_\_\_ from the \_\_\_\_\_. They do not want to catch \_\_\_\_\_ or bring anybody to \_\_\_\_\_ with this \_\_\_\_\_. History Detectives want to learn about the \_\_\_\_\_ from the \_\_\_\_\_ other people leave behind. The further back in the \_\_\_\_\_ we look the harder it is to find \_\_\_\_\_.



A "Source!" is anything that a historian uses as \_\_\_\_\_.

### How what happened to the Tollund man ?

- In May \_\_\_\_\_, a body was discovered in a peat \_\_\_\_\_ Denmark's \_\_\_\_\_ Fen. Two men were digging for peat to \_\_\_\_\_. As they worked, they noticed a face in the peat layer that looked so \_\_\_\_\_ that they thought they had discovered a recent \_\_\_\_\_.
- The men carefully \_\_\_\_\_ the peat from the \_\_\_\_\_, revealing more of him. The man lay on his \_\_\_\_\_ side, as if \_\_\_\_\_.



### What state was his body in?

- He wore no \_\_\_\_\_ but a pointed \_\_\_\_\_ and a smooth hide \_\_\_\_\_. A \_\_\_\_\_ noose and an \_\_\_\_\_ neck ring were wrapped around the victim's \_\_\_\_\_. It was \_\_\_\_\_ wrapped around his \_\_\_\_\_ and \_\_\_\_\_.

### Let's look for evidence:

- A rope \_\_\_\_\_ and a neck \_\_\_\_\_ were found on the body.

### Evidence 1:

- Iron Age people buried \_\_\_\_\_ with their \_\_\_\_\_ as an offering to the \_\_\_\_\_.

### Evidence 2:

- The \_\_\_\_\_ tribes hang \_\_\_\_\_ from trees and drown cowards in \_\_\_\_\_ under piles of \_\_\_\_\_.



### Evidence of age:

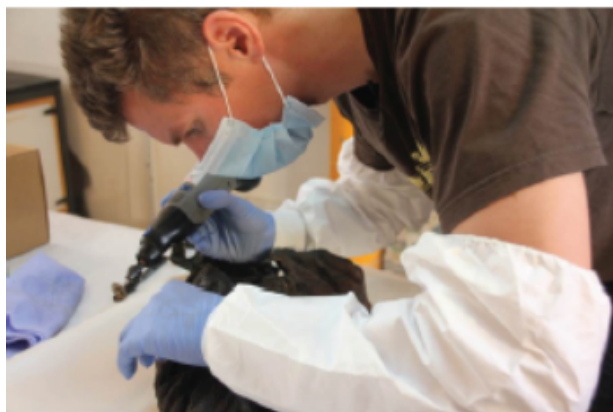
- The \_\_\_\_\_ and organs were \_\_\_\_\_. The \_\_\_\_\_ teeth had grown. These appear in people around \_\_\_\_\_ years of age.

### What was in his stomach?

- The man had eaten \_\_\_\_\_ at least \_\_\_\_\_ hours before he \_\_\_\_\_. The \_\_\_\_\_ was made up of seeds that were connected only with the \_\_\_\_\_.

### What was under his body?

- When they dug the \_\_\_\_\_ some \_\_\_\_\_ were trapped under the body. They were about \_\_\_\_\_ years old.



### What else was found?

- Near the body was discovered a statue of an \_\_\_\_\_. It symbolises \_\_\_\_\_.
- The Goddess of Spring is revered by the \_\_\_\_\_.
- Every Spring, a \_\_\_\_\_ pulls a statue of \_\_\_\_\_ through the streets in a \_\_\_\_\_. Slaves wash the \_\_\_\_\_ and statue after that, and the slaves are \_\_\_\_\_.

